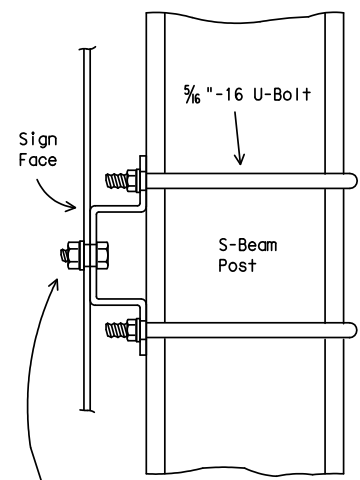
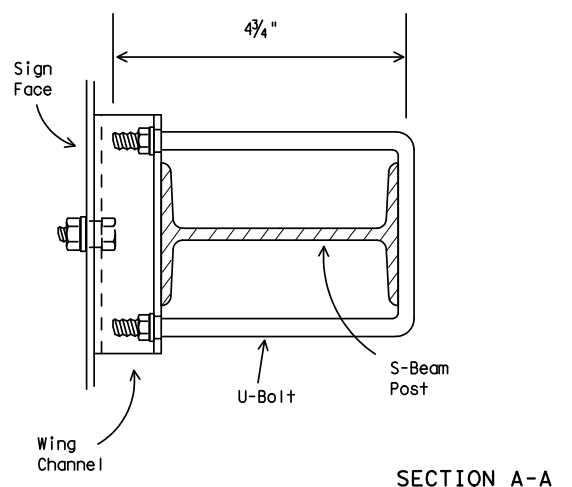
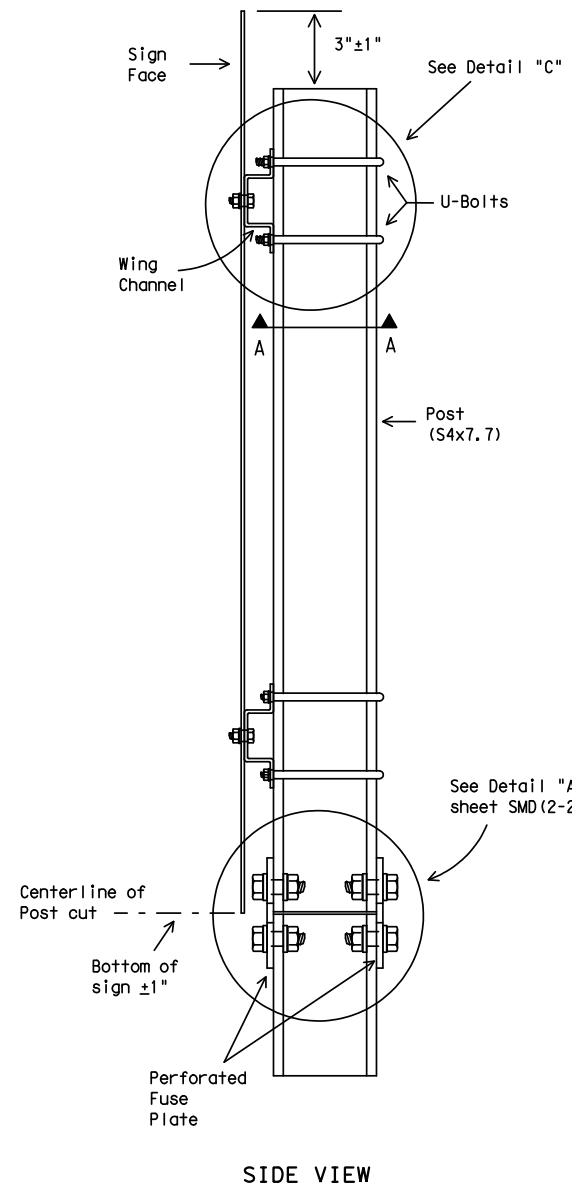


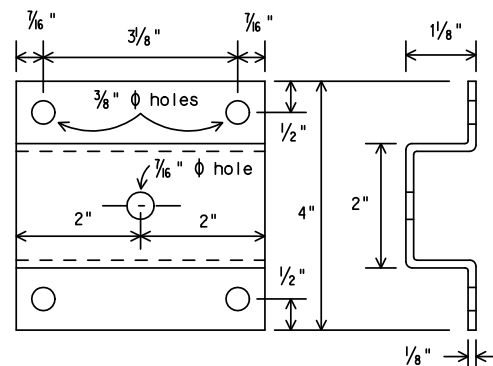
DISCLAIMER: The use of this standard is governed by the "Texas Engineering Practice Act". No warranty of any kind is made by TxDOT for any purpose whatsoever. TxDOT assumes no responsibility for the conversion of this standard to other formats or for incorrect results or damages resulting from its use.

# WING CHANNEL CLAMP DETAIL FOR TYPE G MOUNT



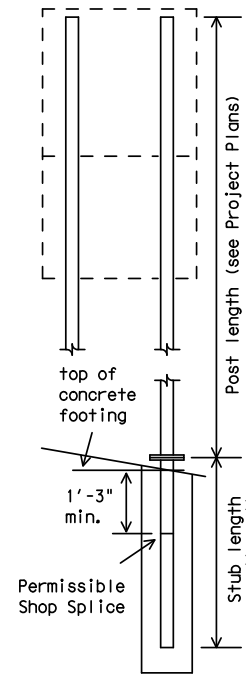
Galvanized steel or aluminum self-locking hex. head nut. 3/8" - 16 x 3/4" hex. head bolt for sheet metal. 3/8" - 16 x 1 1/4" hex. head bolt for plywood. 3/8" galvanized medium washer.

DETAIL "C"



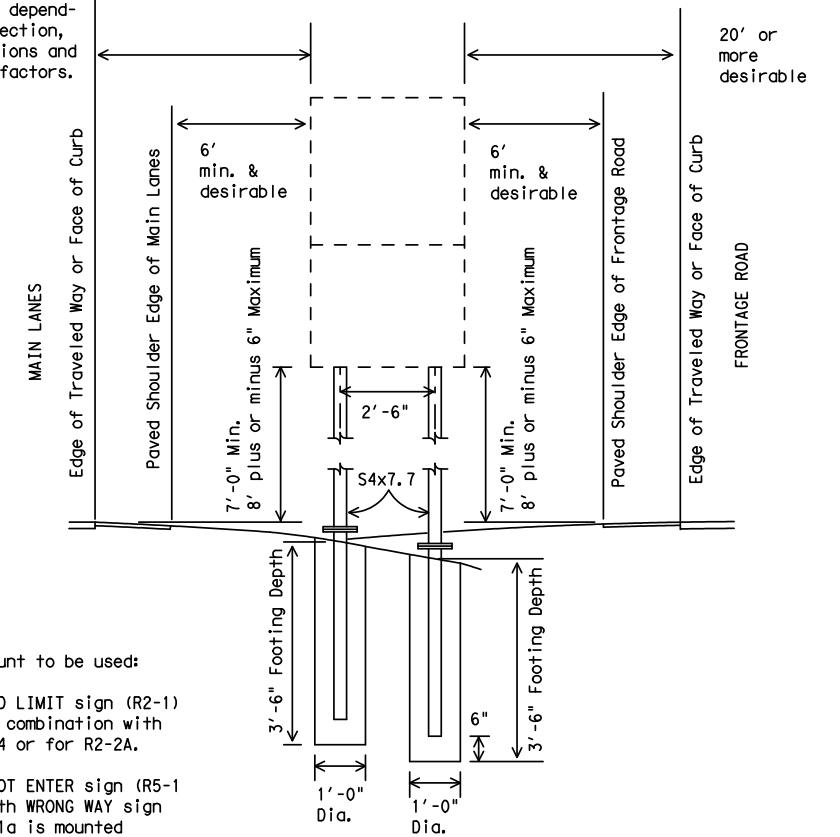
WING CHANNEL

Wing channel, 4" width x 1/8" depth x 1/8" thickness, shall be aluminum (ASTM B221 6061-T6 or B308 6061-T6), galvanized steel (ASTM A36) or stainless steel (ASTM A167 type 304, No. 2B finish).



The weight of one S4x7.7 post is equal to 112.2 lbs. plus 7.7 lbs./ft x (post length in feet minus 10 ft). The weight of 112.2 lbs. includes 10 feet of post length, post foundation stub, related connection plates, friction fuse plate, and all high strength bolts, nuts and washers.

30' or more desirable. May be reduced depending on cross section, viewing conditions and other related factors.



This type mount to be used:

- (1) For SPEED LIMIT sign (R2-1) when used in combination with R2-2 and R2-4 or for R2-2A.
- (2) For DO NOT ENTER sign (R5-1) when used with WRONG WAY sign (R5-1a). R5-1a is mounted above R5-1.

DEPARTMENTAL MATERIAL SPECIFICATIONS  
SIGN HARDWARE  
DMS-7120

GENERAL NOTES:

- 1. Design conforms with AASHTO Specifications for the design and construction of structural supports for highway signs.
- 2. Materials and fabrication shall conform to the requirements of the Department material specifications.
- 3. Structural steel shall be "Low-Alloy Steel" for non-bridge structures per Item 442, "Metal For Structures."
- 4. Parts shall be saw cut either before galvanizing and the galvanized cut cleaned of zinc build-up, or saw cut after galvanizing and the cut surface repaired per Item 445, "Galvanizing." (Cut surface will not be treated until plate is installed and all bolts fully tightened.)



## SIGN MOUNTING DETAILS, TYPE G SUPPORT

SMD(TY G)-08

© TxDOT August 1995	Rev: TxDOT	CK: TxDOT	Rev: TxDOT	CK: TxDOT	
1-97	REVISIONS	CUA/T	SECT	JUP	HIGHWAY
9-08		PIST	COUNTY		SHEET NO.

DATE:  
FILE: