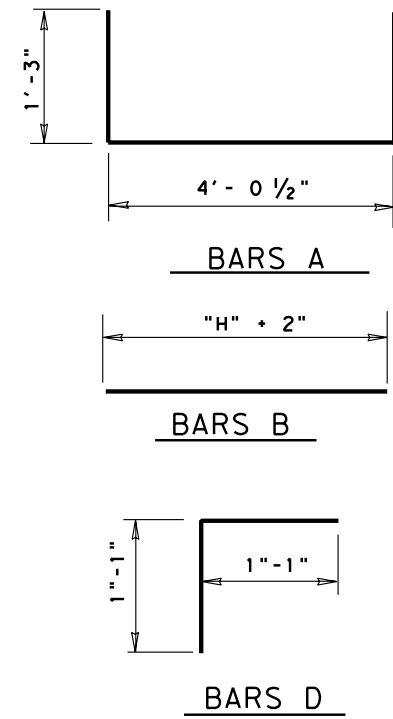
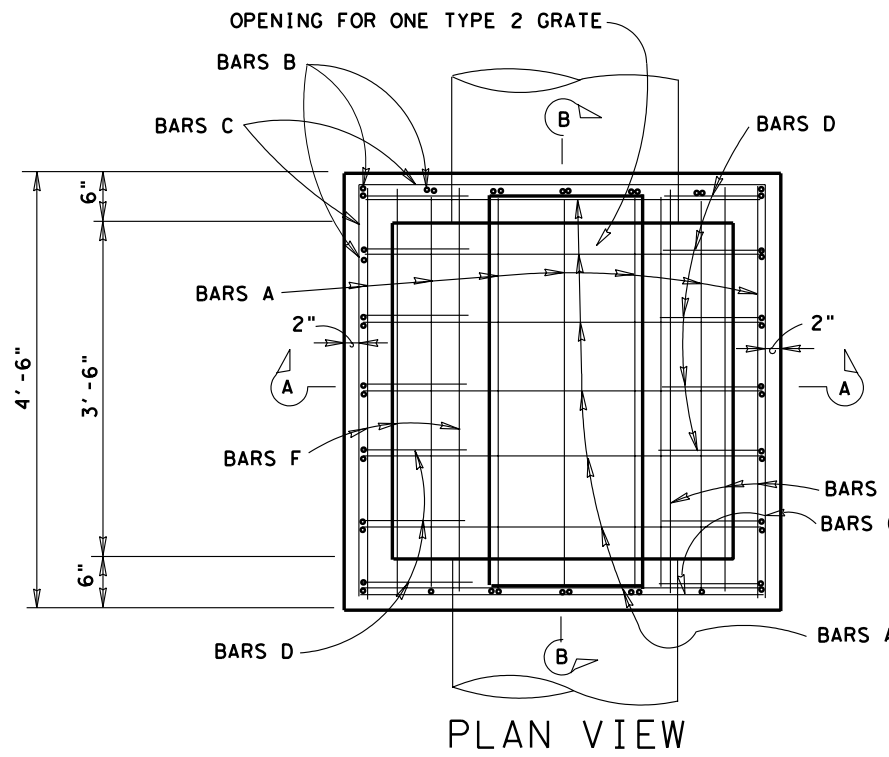
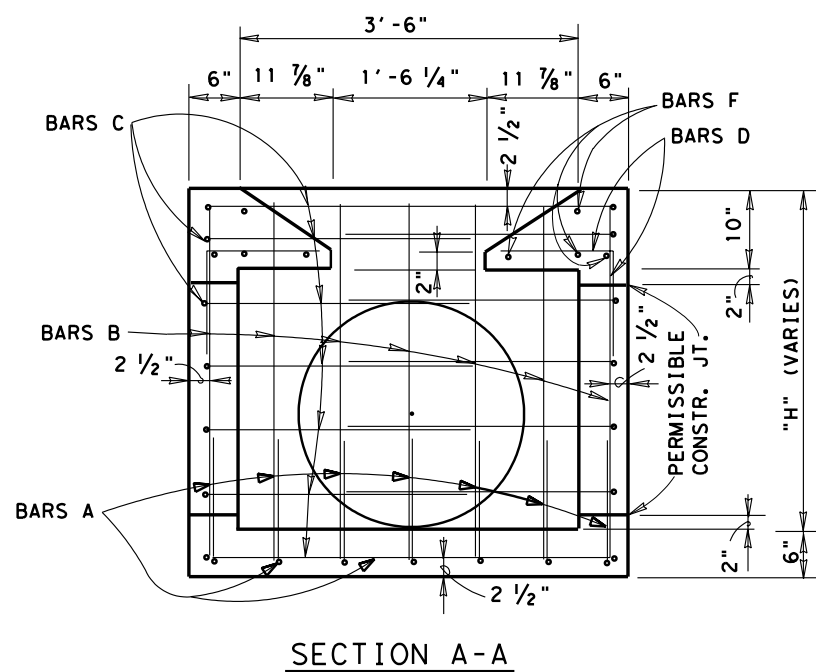


NOTES :

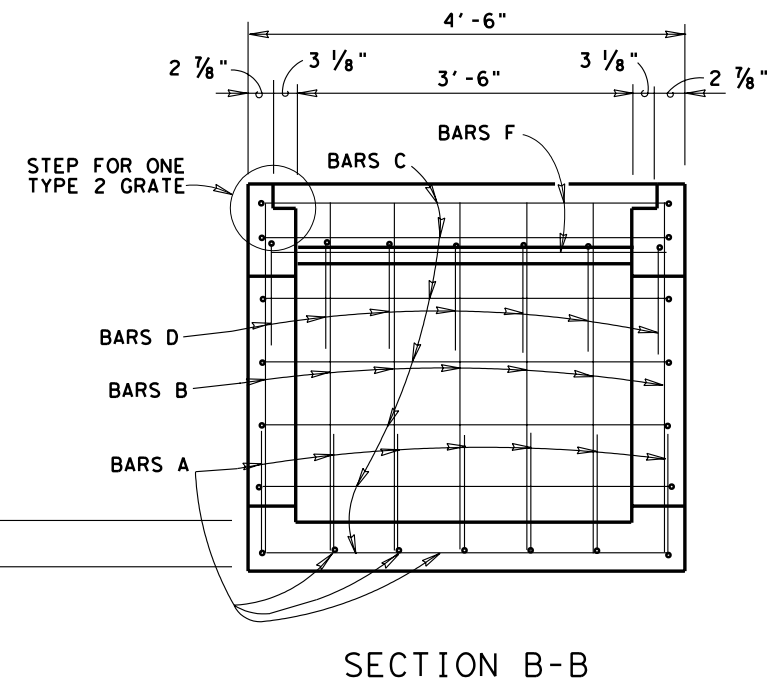
1. ALL CONCRETE SHALL BE CLASS "A". COARSE AGGREGATE GRADE "4" MAY BE USED.
2. DIMENSIONS RELATING TO REINFORCING STEEL ARE TO CENTER OF BARS.
3. REINFORCING STEEL SHALL BE FIELD BENT OR CUT TO ALLOW FOR INSTALLATION OF PIPE(S).
4. PIPES MAY BE PLACED ON ANY SIDE(S) AS INDICATED IN THE PLANS.
5. PAYMENT FOR GRATE, CONC. & STEEL SHALL BE INCLUDED IN THE UNIT COST OF ITEM 465 "MANHOLES & INLETS".
6. THE STATION LOCATION AND OFFSET DISTANCE SHOWN IN THE PLANS IS TO THE CENTER OF THE INLET.
7. RIPRAP BASIN AROUND THE INLET WHEN SHOWN IN THE PLANS IS PAID FOR UNDER ITEM 432.
8. ALL EXPOSED CORNERS SHALL HAVE A 3/4" CHAMFER.



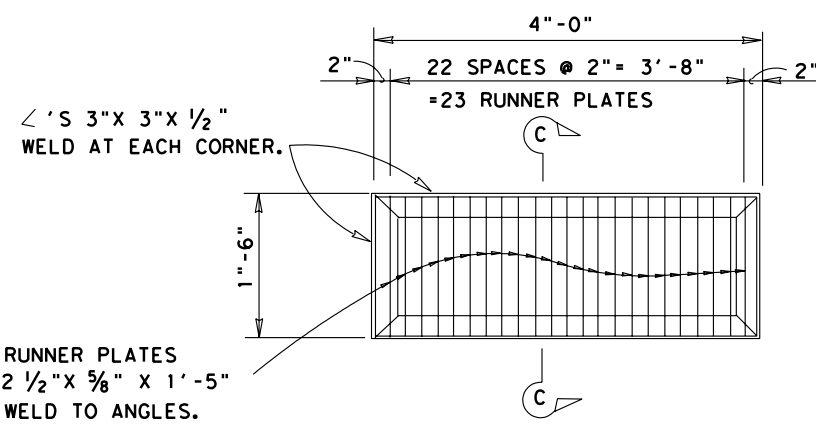
PLAN VIEW



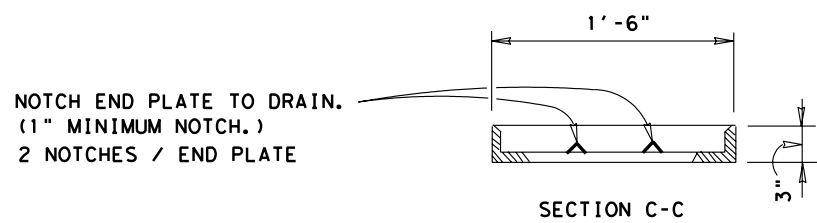
SECTION A-A



SECTION B-B



GRATE ~ TYPE 2



SECTION C-C

ESTIMATED QUANTITIES FOR "H" = 3'					
REINFORCING STEEL					
BAR	NO.	SIZE	SPACING	LENGTH	WEIGHT
A	14	#4	8"±	6' - 6 1/2"	61
B	24	#4	8"±	3' - 2"	51
C	12	#4	8"±	9' - 3"	74
D	14	#4	8"±	2' - 2"	20
F	8	#5	AS SHOWN	4' - 2"	35
TOTAL REINFORCING STEEL (LBS) = 241 ✕					
CL A CONCRETE (C.Y.) = 1.59 ✕					
GRATE TYPE 2 (EA.) = 1 ✕					

QUANTITIES VARY WITH "H"

✕ FOR CONTRACTOR'S INFORMATION ONLY.

**DROP INLET TYPE 3
GRATE TYPE 2
SAN ANTONIO
DISTRICT STANDARD**