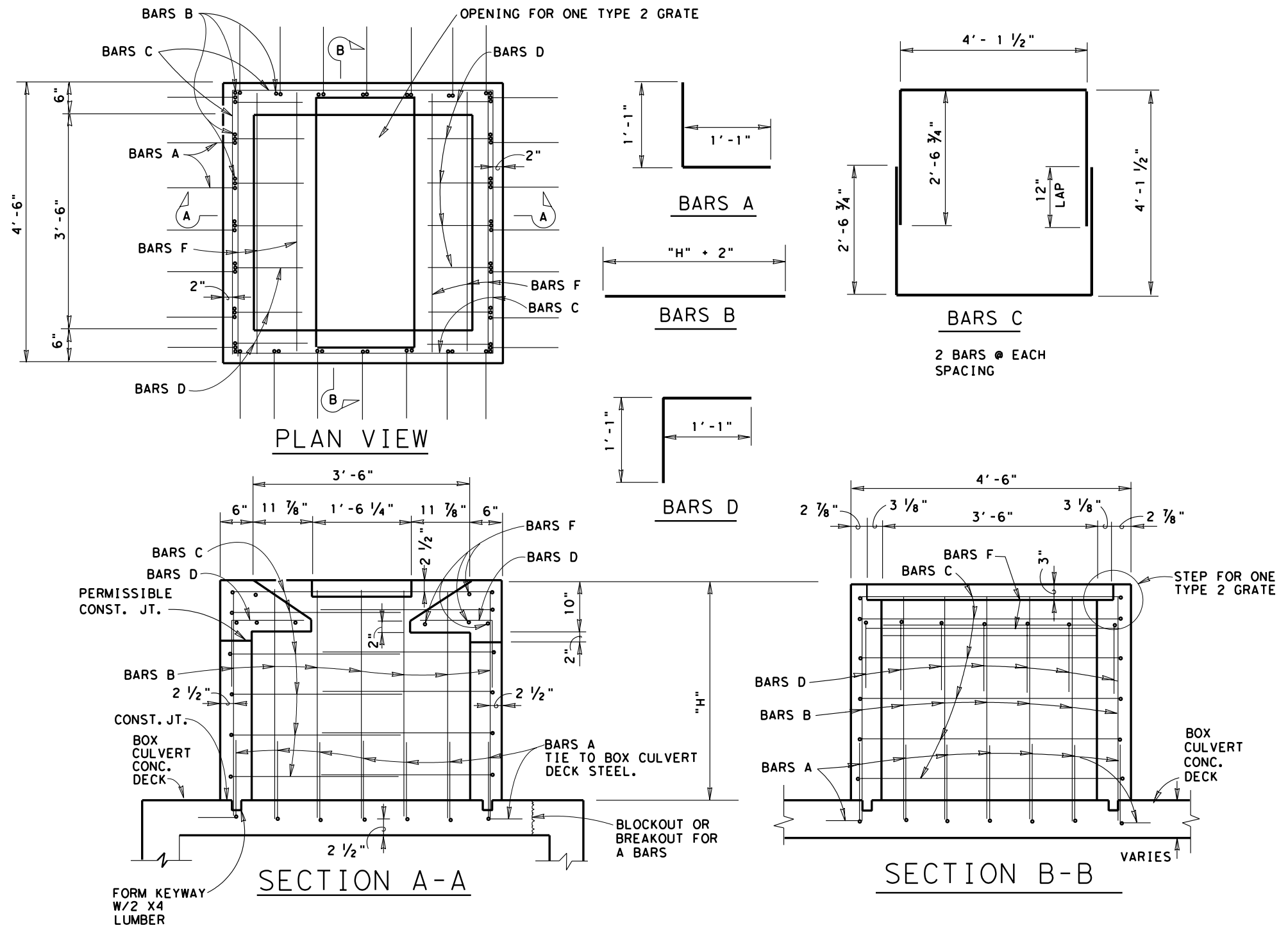


NOTES :

1. ALL CONCRETE SHALL BE CLASS "A". COARSE AGGREGATE GRADE "4" MAY BE USED.
2. DIMENSIONS RELATING TO REINFORCING STEEL ARE TO CENTER OF BARS.
3. PAYMENT FOR CONC., STEEL & GRATE SHALL BE INCLUDED IN THE UNIT COST OF ITEM 465 "MANHOLES & INLETS".
4. THE STATION LOCATION AND OFFSET DISTANCE SHOWN IN THE PLANS IS TO THE CENTER OF THE INLET.
5. RIPRAP BASIN AROUND THE INLET WHEN SHOWN IN THE PLANS IS PAID FOR UNDER ITEM 432.
6. THE WORK FOR THE BLOCKOUT IN THE BOX CULVERT DECK FOR A PROPOSED CULVERT OR THE BREAKOUT OF THE DECK ON AN EXIST. BOX IS SUBSIDIARY TO THE INLET.
7. ALL EXPOSED CORNERS SHALL HAVE A 3/4" CHAMFER.



**DROP INLET TYPE 3A
 GRATE TYPE 2
 SAN ANTONIO
 DISTRICT STANDARD**

ESTIMATED QUANTITIES FOR "H" = 3'

REINFORCING STEEL					
BAR	NO.	SIZE	SPACING	LENGTH	WEIGHT
A	28	#4	8" ±	2'-2"	41
B	24	#4	8" ±	3'-2"	51
C	10	#4	8" ±	9'-3"	62
D	14	#4	8" ±	2'-2"	20
F	8	#5	AS SHOWN	4'-2"	35
TOTAL REINFORCING STEEL (LBS)					209 *
CL A CONCRETE (C.Y.) = 1.02					*
GRATE TYPE 2 (EA.) = 1					*

QUANTITIES VARY WITH "H"

* FOR CONTRACTOR'S INFORMATION ONLY

© 1998 Texas Department of Transportation

FED. RD. DIV. NO. 6	PROJECT NO.	SHEET NO.
STATE TEXAS	STATE DISTRICT SAT	COUNTY
CONT.	SECT.	JOB HIGHWAY NO.

STRUCTURE DESIGN / BRIDGE/STDS/DROPIN3A.DGN