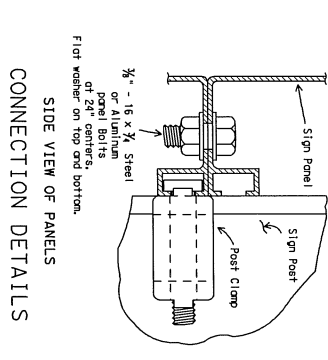
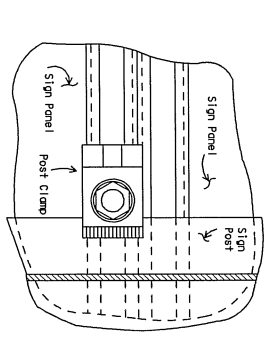
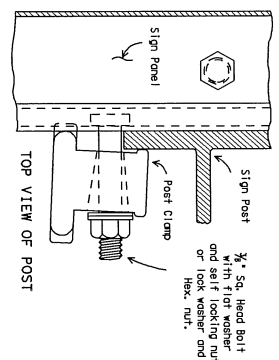
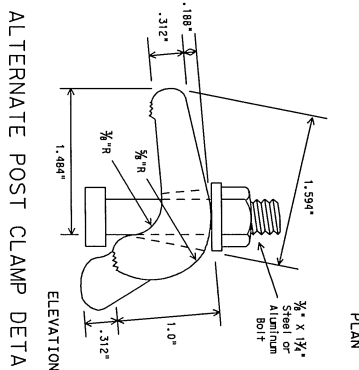
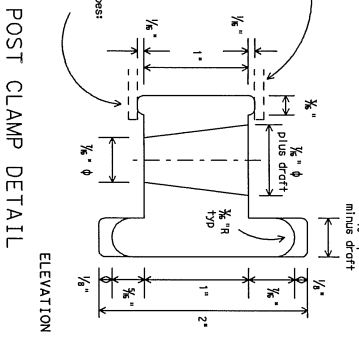
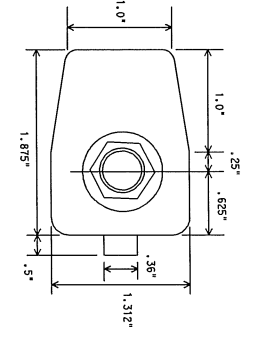
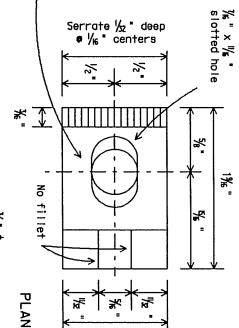


DISCLAIMER: The use of this standard is governed by the "Texas Engineering Practice Act". No warranty of any kind is made by TxDOT for any purpose whatsoever. TxDOT assumes no responsibility for the conversion of this standard to other formats or for incorrect results or damages resulting from its use.

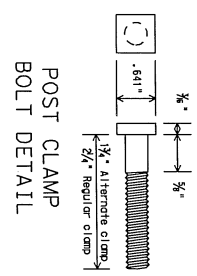
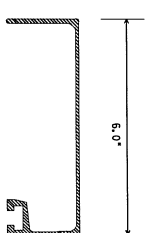
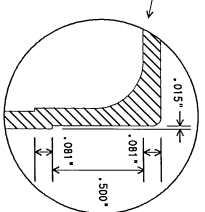
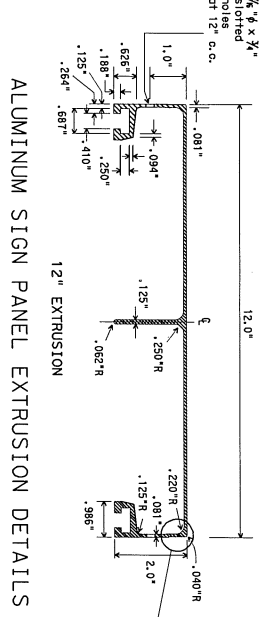
DATE:
FILE:

NOTE: centerline of hole for 3/8" diameter serrated bolt is x 2 1/4" and y 1/4" for web and nut and hex. nut. Bolt thread dimensions shall be in accordance with ANSI B 18.2.1 as referred to in the AISI Manual of steel construction. Bolt assembly shall be galvanized.



DEPARTMENTAL MATERIAL SPECIFICATIONS
SIGN HARDWARE
DMS-1120

- GENERAL NOTES:
1. Design conform with AISI10 specifications for the design and construction of structural supports for highway signs.
 2. Material and construction shall conform to the requirements of the Department manual specifications for "metal" for non-hr/igs structures per Item 442 "Metal For Structures."
 3. For fiber/igs substrate connection detail is, see manufacturer's recommendations.



Texas Department of Transportation
Traffic Operations Division

SIGN MOUNTING DETAILS-
EXTRUDED ALUMINUM
SIGN PANELS & HARDWARE
SMD (2-1) -08

DATE	BY	CHECKED	APPROVED
9-08	NS/11/96	NS/11/96	NS/11/96
DATE	BY	CHECKED	APPROVED
9-08	NS/11/96	NS/11/96	NS/11/96

27A