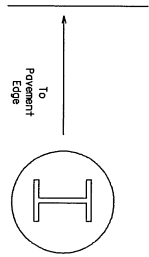
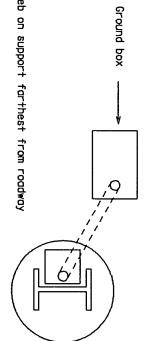


DISCLAIMER: The use of this standard is governed by the "Texas Engineering Practice Act". No warranty of any kind is made by TxDOT for any purpose whatsoever. TxDOT assumes no responsibility for the conversion of this standard to other formats or for incorrect results or damages resulting from its use.

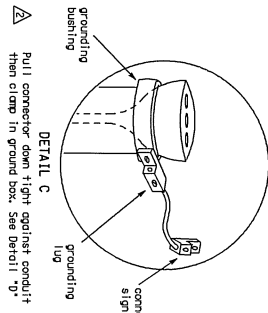
DATE: FILE:



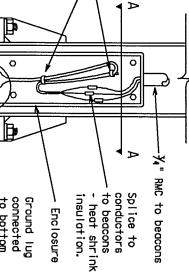
PLAN VIEW



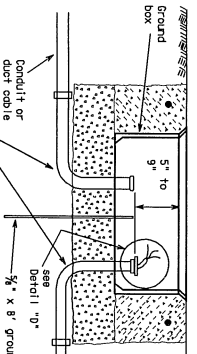
Dr-111 sign post - structure leg, terminate bonding jumper with listed connector to post with a 10-24 (3/16") min. stainless steel machine screw, nut, flat washer and lock washer made wrench tight.



DETAIL C



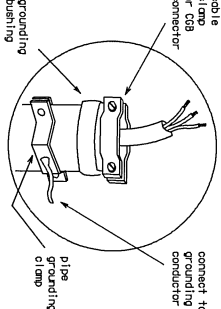
DETAIL B



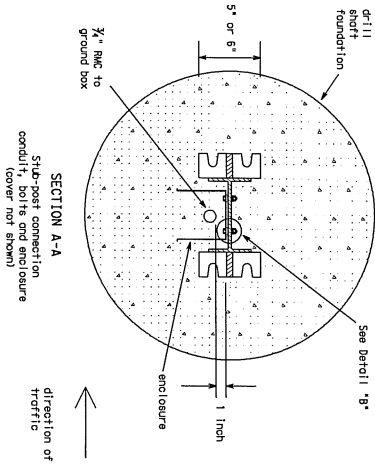
DETAIL A

Use RMC E115, provide grounding bushings. Terminate bonding jumper to ground rod and equipment grounding conductors.

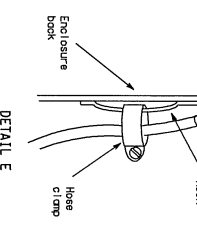
Electrical connection detail. Enclosure cover not shown for clarity. Detail shows channel greater than 4 inches. Less than 4 inches similar, see Detail A.



DETAIL D

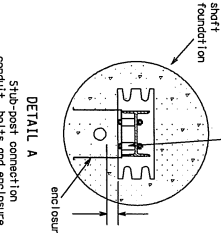


SECTION A-A

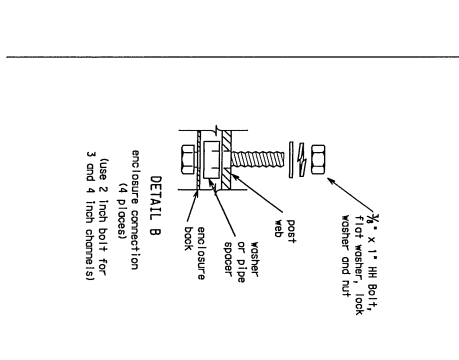
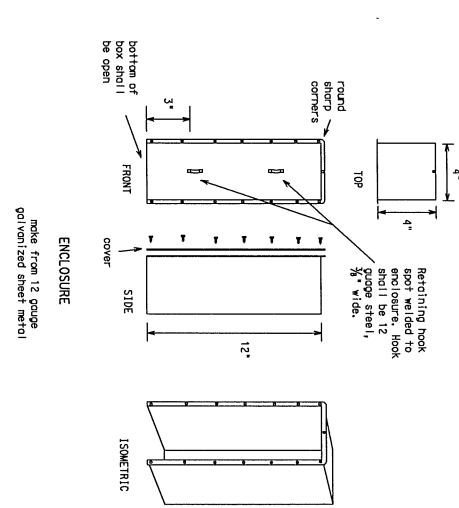


DETAIL E

steel pipe spacer 1 1/2" for 4" channel. See detail B



DETAIL A



DETAIL B

NOTES:

1. Breakout connector shall be rated for 300 VAC, 30 amps and shall be waterproof. Connector shall be a three pole (two line conductors and neutral) polarized elastomer connector made from thermosetting synthetic polymer which remains flexible over the temperature range of -40 degrees C to 90 degrees C. The pins on the tips of the pins with the same material used in the construction of the connector body. This prevents the intrusion of water into the connection when the double taper wire fully engaged. The pin receptors shall have current carrying bars exposed 1/2 inch. The plug/receptacle combination shall be tested by a recognized testing facility (UL or Factory Mutual) as suitable for outdoor use and shall have passed a rain test and a water-tight (immersion) test as approved by the Engineer.
2. The female connector shall be integrally molded to a 1/2" length of type 50 cord containing three number 20 or number 24 AWG conductors. The male connector shall be number 8 AWG conductors. Cord conductors shall have colored insulation, the black and one white, or shall be taped or painted to be the black and one white. Taps or marking shall cover entire exposed length. The connector shall make a positive contact on cord conductors. Breakaway connector and cord shall not be used.
3. The connector shall install in-line waterproof insulators for each line conductor. Listed fuse kits or equal.
4. Conduit shall convert to 1/2" liquid tight flexible metallic conduit below the fuse kit and knee joint. The knee joint shall be made of 1/2" rigid conduit.
5. Ground rod or clamp shall be Blolumin 66 5/8", heavier 1/2" or equal.
6. Ground rod or clamp shall be driven to a depth to leave between 2 to 4 inches of rod above the gravel placed under the ground box. See ED(2) standard sheet for ground box details.

11-01 Revision  
 Liquid tight conduit  
 Editing of notes

**Texas Department of Transportation**  
*Traffic Operations Division*

**SIGN MOUNTING DETAILS-  
 LARGE ROADSIDE SIGNS  
 ELECTRICAL CONNECTION**

**SMD (2-6)-01**

11-98	11-98	11-98	11-98
REVISED	REVISED	REVISED	REVISED
DATE	DATE	DATE	DATE
BY	BY	BY	BY