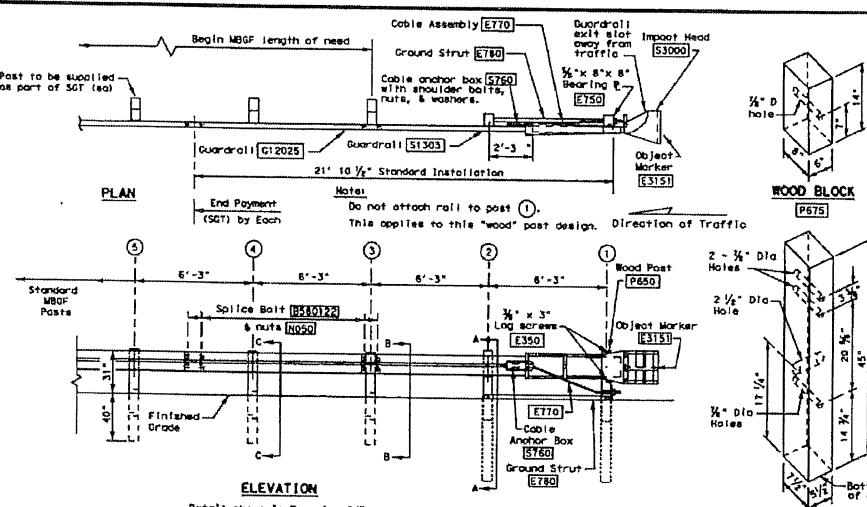
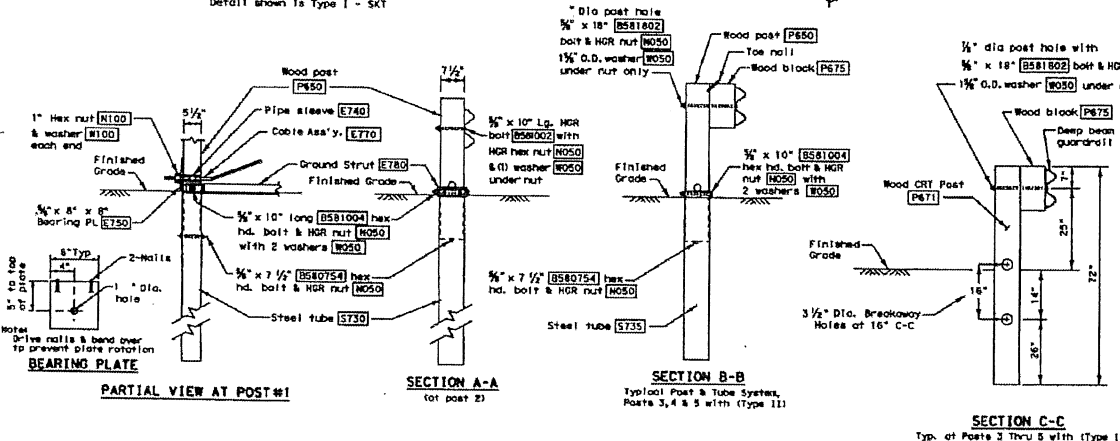


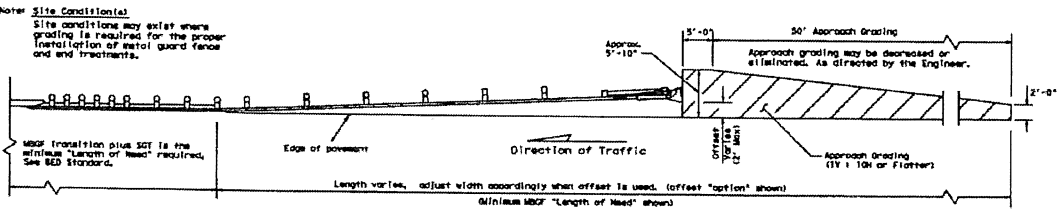
DISCLAIMER: The use of this standard is governed by the "Texas Engineering Practice Act". No warranty of any kind is made by TxDOT for any purpose whatsoever. TxDOT assumes no responsibility for the conversion of this drawings to other formats or for the accuracy or completeness of the information resulting from the use.



- GENERAL NOTES**
- For additional information contact Interstate Steel Inc., (432) 263-3725.
 - The Type of SGT unit will be specified elsewhere in the plans. Numbers in circles indicate post position. The Type of SGT unit chosen is a maintenance consideration and does not affect the systems performance.
 - SGT's placed within the "minimum" 150 ft. radius, shall be installed straight. Standard roll elements may be installed within the radius, without special fabrications.
 - All bolts, nuts cable assemblies, cable anchors, steel tubes & bearing plates shall be galvanized.
 - A flare rate of 25:1 may be used to prevent the terminal head from encroaching on the shoulder. The flare may be decreased or eliminated for specific installations, if directed by the Engineer.
 - The steel tubes shall not protrude more than 4 inches above ground. Site grading may be necessary to meet this requirement.
 - The steel tubes may be driven with an approved driving head. They shall not be driven with the wood post in the tube. If the steel tubes are placed in drilled holes, the backfill material must be satisfactorily compacted to prevent tube settlement.
 - If solid rock is encountered, see the Manufacturer's installation manual for the proper installation guidance.
 - The breakaway cable assembly must be taut. A locking device, (vice grip or anemol lock pliers) should be used to prevent the cable from twisting when tightening the nuts.
 - The wood blocks shall be "toe nailed" to the rectangular wood posts to prevent them from turning when the wood shrinks. The bearing plate on the front post shall also be "toe nailed" to prevent rotation.
 - For curb installations, the soil tubes and posts shall be installed at the proper ground elevation behind the curb. The posts will then require field drilling new holes to accommodate the rail to post connection bolts to maintain the proper height of the rail above the gutter pan. The excess post length above the rail will be removed as directed by the Engineer.
 - An object marker shall be installed on the front of the impact head as detailed on D80M(VIA).
 - A special site evaluation should be considered, prior to using this end treatment where there is less than 25 feet between the outlet side of the end treatment and any adjacent driving lane.
- POST & TUBE OPTIONS**
- Type I post ① thru ⑤
Type II post ① thru ⑤



Code #	POST & TUBE OPTIONS		DESCRIPTION
	Type I Qty.	Type II Qty.	
S1303	1	1	Guardrail (12 Ga.) 12'-6" SKT Panel
G12025	1	1	Guardrail (12 Ga.) 8'-4 1/2"
S750	2	2	Steel Tube - 6" x 8" x 72" x 1/2"
S735	0	3	Steel Tube - 6" x 8" x 54" x 1/2"
P650	2	5	Wood Post - 5 1/2" x 7 1/2" x 45" Universal
P671	3	0	Wood CRT Post - 6" x 8" x 72" Universal
P675	3	3	Wood Block - 6" x 8" x 14"
E740	1	1	Pipe Sleeve - 2" Std. Pipe x 5 1/2"
E750	1	1	Bearing Plate - 3/4" x 8" x 8"
S760	1	1	Cable Anchor Box
E770	1	1	Cable Assembly
E780	1	1	Ground Strut
S3000	1	1	Impact Head
B580754	2	5	3/4" x 7 1/2" Hex Hd. Bolt
B581004	2	5	3/4" x 10" Hex Hd. Bolt (Top of Tubes)
N050	8	14	1/2" Washers
B581002	1	1	3/4" x 10" HGR Post Bolt (Post 2)
B580122	16	16	3/4" x 1 1/2" HGR Splice Bolt
B581802	3	3	3/4" x 18" HGR Post Bolt (Posts ③ thru ⑤)
N050	24	30	3/4" HGR Nut
E350	2	2	3/4" x 3" Log Screw
N100	2	2	1" Hex Nut (Anchor Cable)
W100	2	2	1" Washer (Anchor Cable)
B589A	8	8	Cable Anchor Box Shoulder Bolts
N055A	8	8	1/2" A325 Structural Nut
N050A	16	16	1/2" A325 Structural Washer
E3151	1	1	Object Marker - (18" x 18")



Andrew M., P.E.
9/28/12

Texas Department of Transportation

SINGLE GUARDRAIL TERMINAL
(SKT-31)
(WOOD POST)
Low Speed TL 2

FILE	10/26/2011 12:41:02	REV	TxDOT	CU	MM	REV	VP	CU
DATE	10/20/2011	DATE	12/20/2011	DATE	12/20/2011	DATE	12/20/2011	DATE
NO	3-16-2012	NO	REV	NO	REV	NO	REV	NO
REV	1	REV	1	REV	1	REV	1	REV
NO	1	NO	1	NO	1	NO	1	NO
NO	1	NO	1	NO	1	NO	1	NO