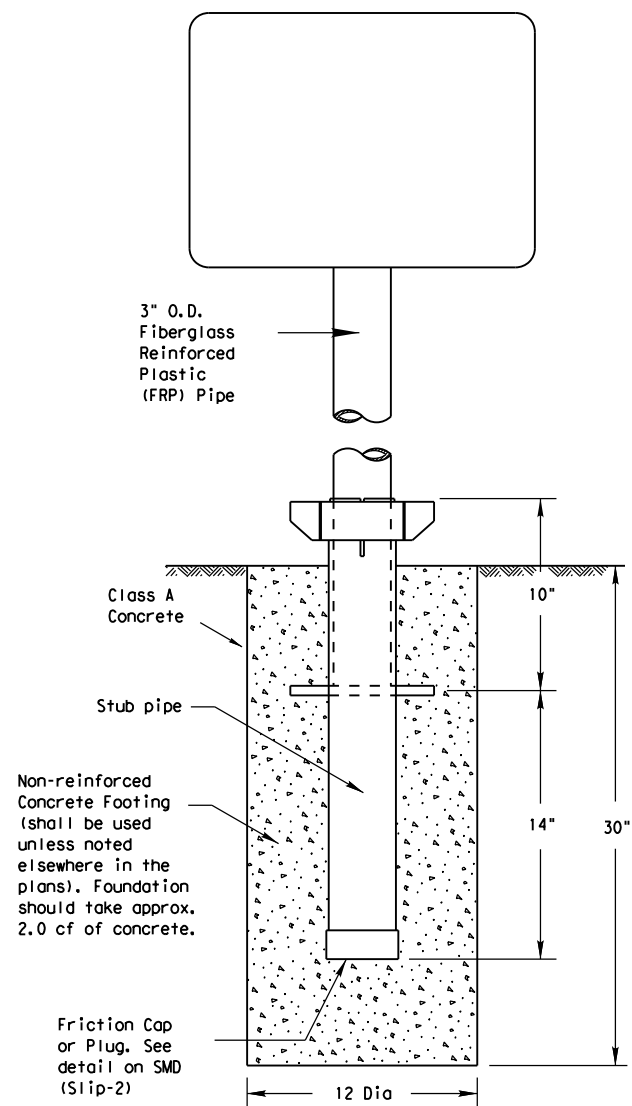
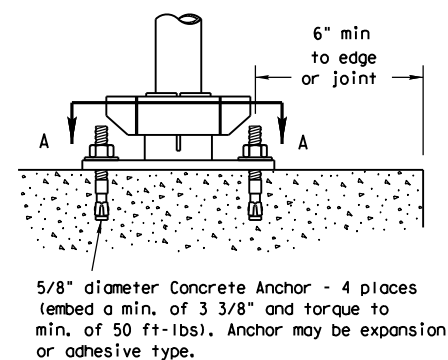
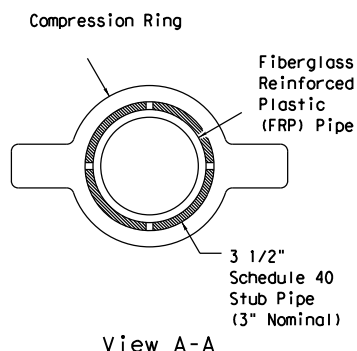
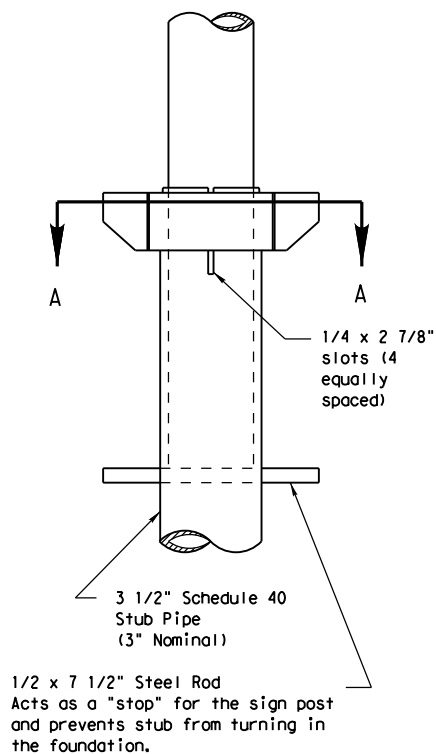


## Universal Anchor System with Fiberglass Reinforced Plastic (FRP) Post

DISCLAIMER: The use of this standard is governed by the "Texas Engineering Practice Act". No warranty of any kind is made by TxDOT for any purpose whatsoever. TxDOT assumes no responsibility for the conversion of this standard to other formats or for incorrect results or damages resulting from its use.

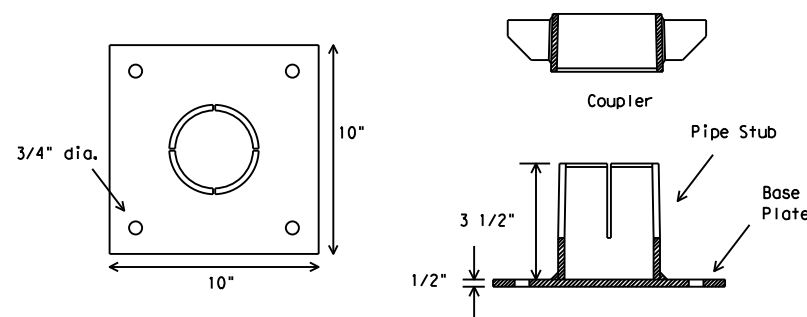


SM RD SGN ASSM TY FRP(X)UA(P)



Concrete anchor consists of 5/8" diameter stud bolt with UNC series bolt threads on the upper end. A heavy hex nut per ASTM A563 and hardened washer per ASTM F436. The stud bolt shall have minimum yield and ultimate tensile strengths of 50 and 75 ksi, respectively. Nuts, bolts and washers shall be galvanized per Item 445, "Galvanizing." Top of bolt shall extend at least flush with top of nut when installed. The anchor, when installed in 4000 psi normal-weight concrete with a 3 3/8" minimum embedment, shall have a minimum allowable tension and shear of 2450 and 1525 psi, respectively. Adhesive type anchors shall have stud bolts installed with Type III epoxy per DMS-6100, "Epoxy and Adhesives." Adhesive anchors may be loaded after adequate epoxy cure time per the manufacturer's recommendations.

### BOLT-DOWN DETAILS



SM RD SGN ASSM TY FRP(X)UB(P)

#### GENERAL NOTES:

- FRP sign supports for a single type sign support may be used for signs up to and including 16 square feet. Dual post installation may be used for signs up to and including 32 square feet.
- All nuts, bolts and washers shall be galvanized per Item 445, "Galvanizing."
- See the Traffic Operations Division website for detailed drawings of sign clamps. The website address is: <http://www.txdot.gov/publications/traffic.htm>

#### FRP POST REQUIREMENTS

- Materials shall conform to the requirements of Departmental Material Specification DMS-4410 and will be furnished in a yellow or gray color as specified elsewhere in the plans.
- Thickness of FRP sign support is 0.125" + 0.031", - 0.0".
- FRP sign supports are prequalified by the Traffic Operations Division. Prequalification procedures are obtained by writing:  
Texas Department of Transportation  
Traffic Operations Division  
125 East 11th Street  
Austin, Texas 78701-2483

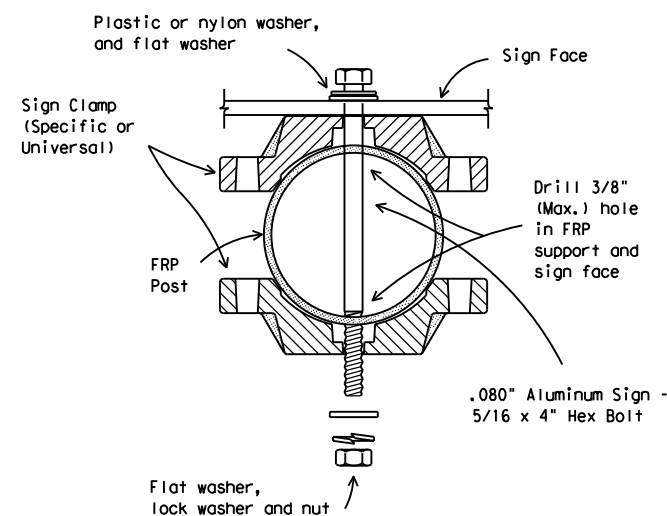
#### UNIVERSAL ANCHOR SYSTEM INSTALLATION PROCEDURES

- Dig foundation hole. Where solid rock is encountered at ground level, the foundation shall be a minimum depth of 18". When solid rock is encountered below ground level, the foundation shall extend in the solid rock a minimum depth of 18" or provide a minimum foundation depth of 30". If solid rock is encountered, the socket/stub may be reduced in length as required to a minimum length of 18". Any material removed from the socket/stub shall be from the bottom and the clearance requirements given on SMD(GEN) must be followed. The inner surfaces of the socket/stub must remain free of concrete or other debris.
- The Engineer may permit batches of concrete less than 2 cubic yards to be mixed with a portable, motor driven concrete mixer. For small placements less than 0.5 cubic yards, hand mixing in a suitable container may be allowed by Engineer. Concrete shall be Class A.
- Insert base post in foundation hole to depths shown and fill hole with concrete. Cut base post from bottom and ensure a minimum of 18" embedment if installed in solid rock.
- Level and plumb the base post with coupler using a torpedo level and let concrete set a minimum of 4 days, unless otherwise directed by Engineer. Bottom of base post slots shall be above the concrete footing.
- Attach sign to FRP post.
- Insert sign post into base post. Lower until the post comes to rest on the steel rod.
- Use hammer to ensure the coupler is firmly seated. Top of coupler should be level with top of base post in most instances.
- Check sign to ensure there is no twist. If loose, increase the tightening of coupler.

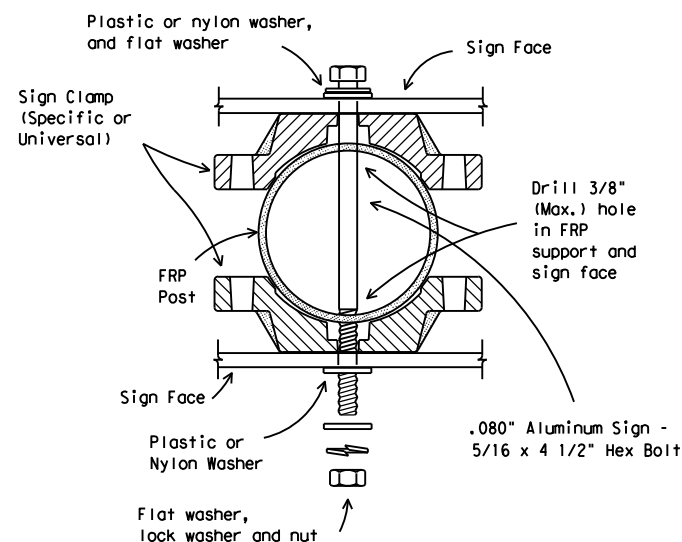
#### BOLT DOWN SIGN SUPPORT

- Position base plate with coupler on existing concrete.
- Drill holes into concrete and insert the 5/8" diameter bolts with wedge anchors, and tighten nuts.
- Attach sign to FRP post.
- Insert bottom of sign post into pipe stub.
- Use hammer to ensure the coupler is firmly seated. Top of coupler should be level with top of base post in most instances.
- Check sign to ensure there is no twist. If loose, increase the tightening of coupler.

### Typical Sign Mounting Detail for FRP Support with Single Sign



### Typical Sign Mounting Detail for FRP Support with Back-to-Back Signs



Texas Department of Transportation  
Traffic Operations Division

## SIGN MOUNTING DETAILS SMALL ROADSIDE SIGNS UNIVERSAL ANCHOR SYSTEM WITH FRP POST

SMD (FRP) -08

© TxDOT July 2002		DN: TxDOT	CK: TxDOT	DW: TxDOT	CK: TxDOT
9-08	REVISIONS		CONT	SECT	JOB
			DIST	COUNTY	SHEET NO.

DATE:  
FILE: